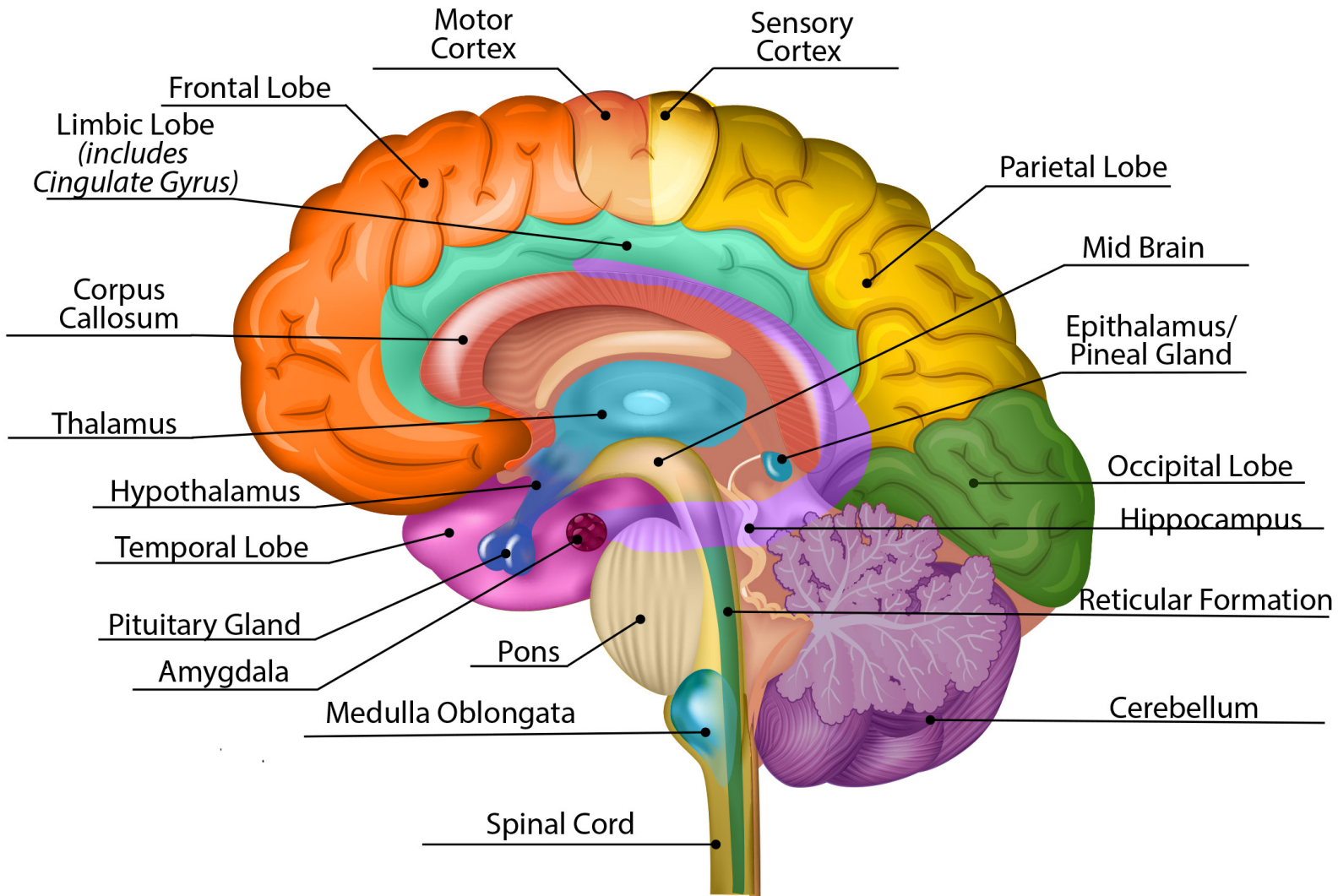


ANATOMY OF THE BRAIN

WORKSHEET KEY

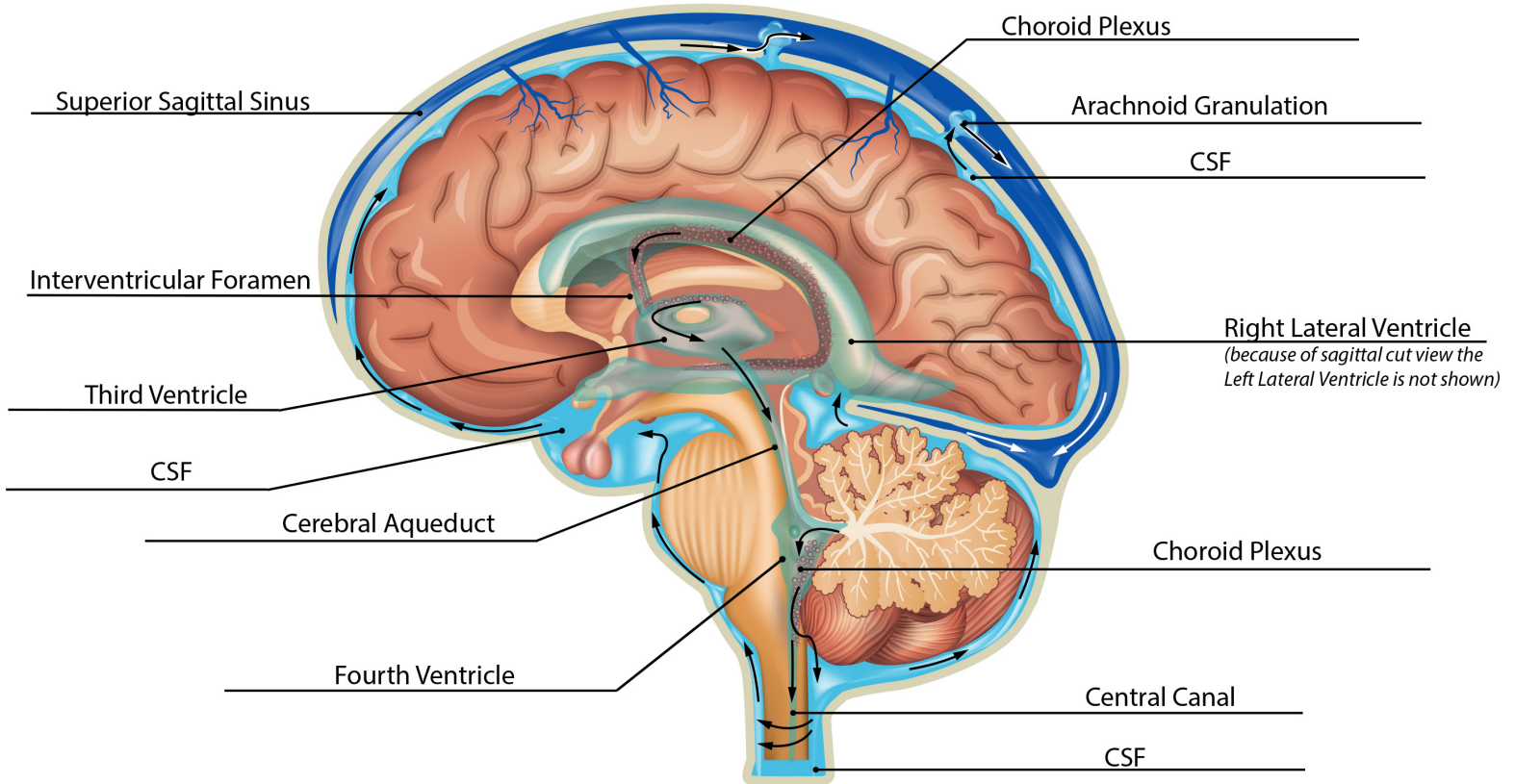


IDENTIFY AND LABEL THE PARTS OF THE BRAIN:

Frontal Lobe, Hippocampus, Limbic Lobe (includes Cingulate Gyrus), Parietal Lobe, Pons, Hypothalamus, Epithalamus/Pineal Gland, Thalamus, Cerebellum, Temporal Lobe, Sensory Cortex, Motor Cortex, Occipital Lobe, Corpus Callosum, Amygdala, Spinal Cord, Pituitary Gland, Medulla Oblongata, Reticular Formation, Midbrain

CEREBRAL SPINAL FLUID (CSF) & VENTRICLES

WORKSHEET KEY



IDENTIFY AND LABEL:

Superior Sagittal Sinus, Fourth Ventricle, Choroid Plexus (label 2 places), CSF (label 3 places), Right Lateral Ventricle, Interventricular Foramen, Cerebral Aqueduct, Arachnoid Granulation, Third Ventricle, Central Canal

FILL IN THE BLANK or ANSWER:

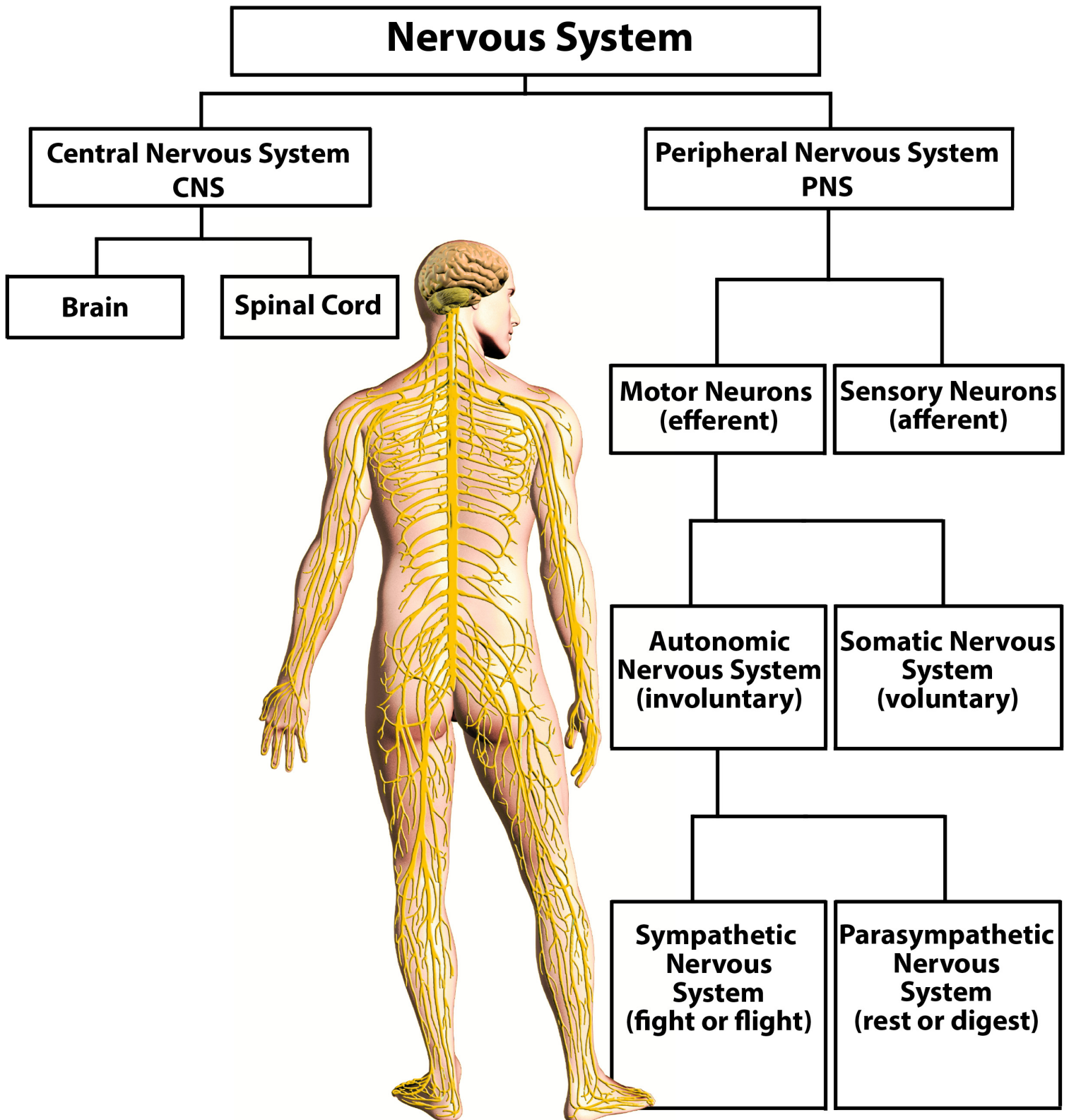
The fluid that bathes the brain is known as Cerebral Fluid.

The fluid that is located in the spinal cord is known as Spinal Fluid.

What ventricle is not shown in this ventricle chart? Left Lateral Ventricle.

NERVOUS SYSTEM

WORKSHEET 1 KEY

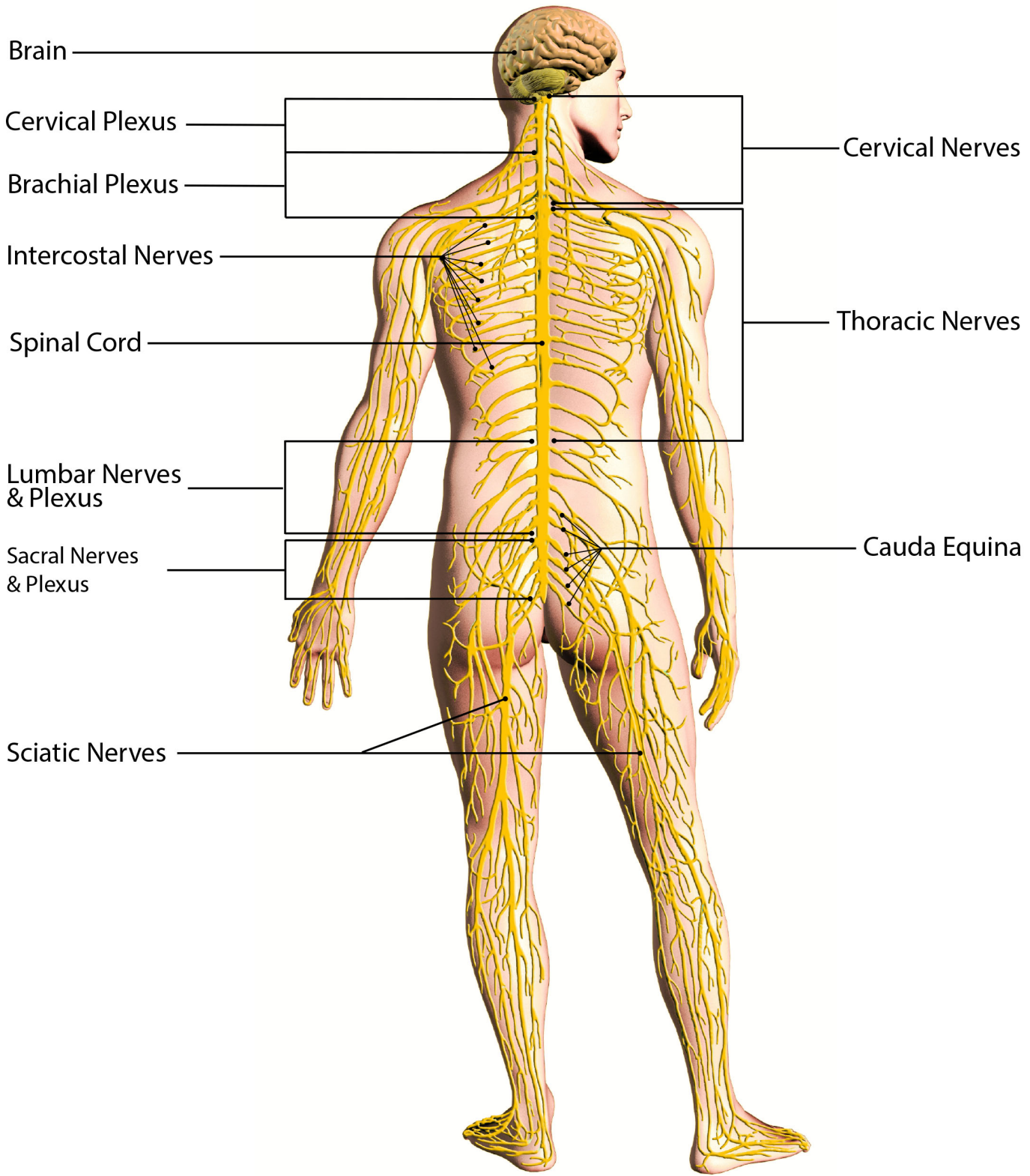


FILL IN THE BOXES WITH EACH COMPONENT OF THE NERVOUS SYSTEM:

Spinal Cord, Central Nervous System, Motor Neurons (efferent), Peripheral Nervous System, Autonomic Nervous System, Sympathetic Nervous System, Parasympathetic Nervous System, Brain, Sensory Neurons (afferent), Somatic Nervous System

NERVOUS SYSTEM

WORKSHEET 2



IDENTIFY AND LABEL THE FOLLOWING:

Brachial Plexus, Spinal Cord, Cervical Nerves, Lumbar Nerves & Plexus, Cauda Equina, Sciatic Nerves, Intercostal Nerves, Thoracic Nerves, Sacral Nerves & Plexus, Brain, Cervical Plexus

CRANIAL NERVES

WORKSHEET KEY

CRANIAL NERVE (CN)		FUNCTION
CN I	OLFACTORY	<i>Processes Brain signal to move the eyes up & down, and outward. (like a pulley)</i>
CN II	OPTIC	<i>Responsible for hearing information, getting it to the brain & balance</i>
CN III	OCULOMOTOR	<i>Conveys sensory information for the front 2/3 tip of the tongue. Controls muscles used for facial expression. (Lacrimal and Salivary glands.)</i>
CN IV	TROCHLEAR	<i>Transmits sensations to the mouth, teeth, face, and nasal cavity . Controls muscles for chewing.</i>
CN V	TRIGEMINAL	<i>Interprets and processes smells & tastes and ties them to an emotion and/or law-sensory.</i>
CN VI	ABDUCENS	<i>Looking forward you can see 180 degrees to the lateral sides.</i>
CN VII	FACIAL	<i>Controls outward Lateral Rectus Movement.</i>
CN VIII	VESTIBULOCOCHLEAR	<i>Controls Tongue for speech and swallowing.</i>
CN IX	GLOSSOPHARYNGEAL	<i>Provides movement to the Sternocleidomastoid Muscle & Trapezius Muscle.</i>
CN X	VAGUS	<i>Senses light for dilation & constriction of pupils • controls movement of muscles in pupils, eyeballs, and eyelids.</i>
CN XI	ACCESSORY	<i>Receives sensory information for taste. Controls muscles for swallowing with the tongue, back of the throat & gag reflex.</i>
CN XII	HYPOGLOSSAL	<i>Commands unconscious body procedures to maintain homeostasis.</i>

INSTRUCTION: Match the Cranial Nerves with their Function(s) by drawing a line connecting them.