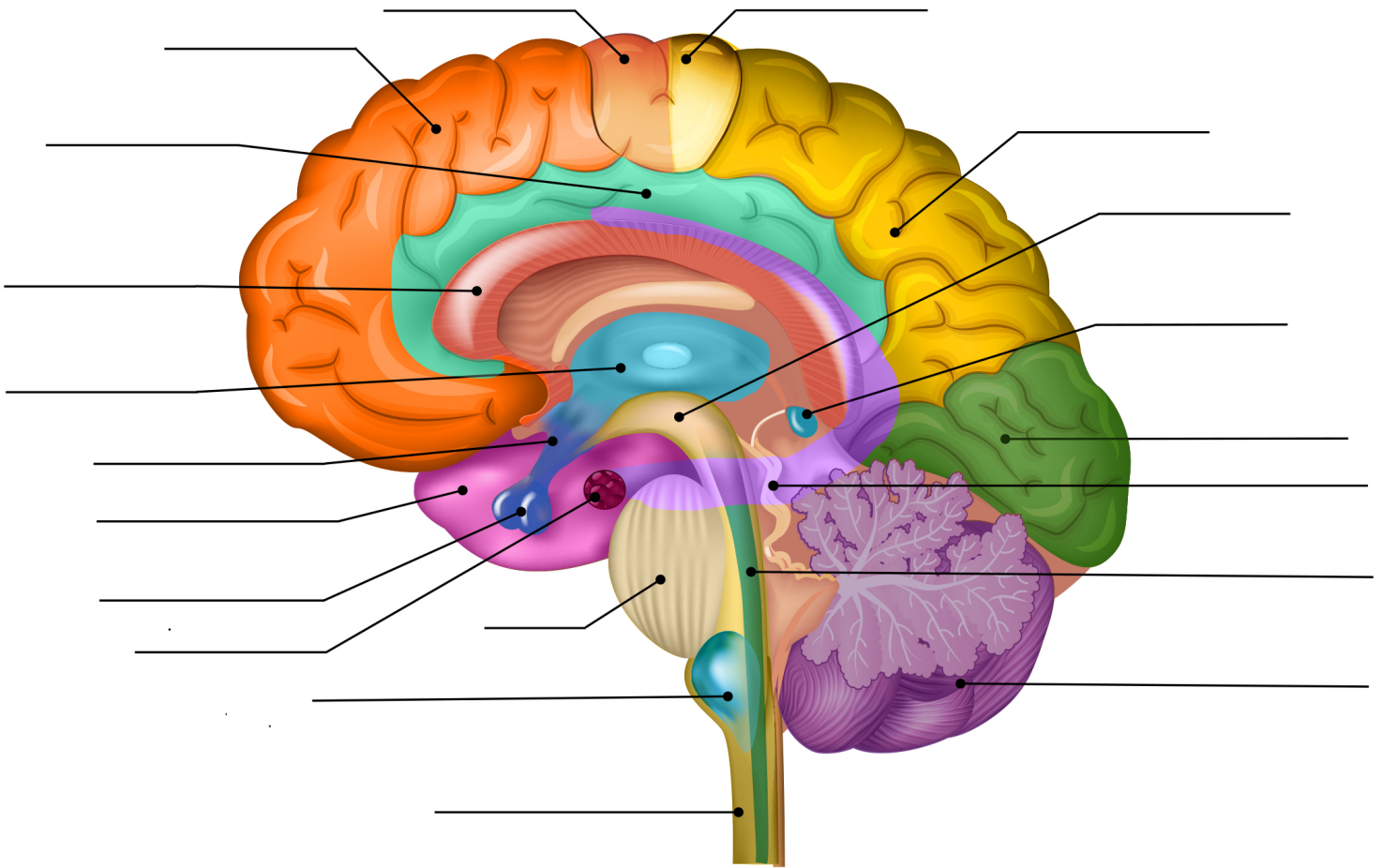


ANATOMY OF THE BRAIN

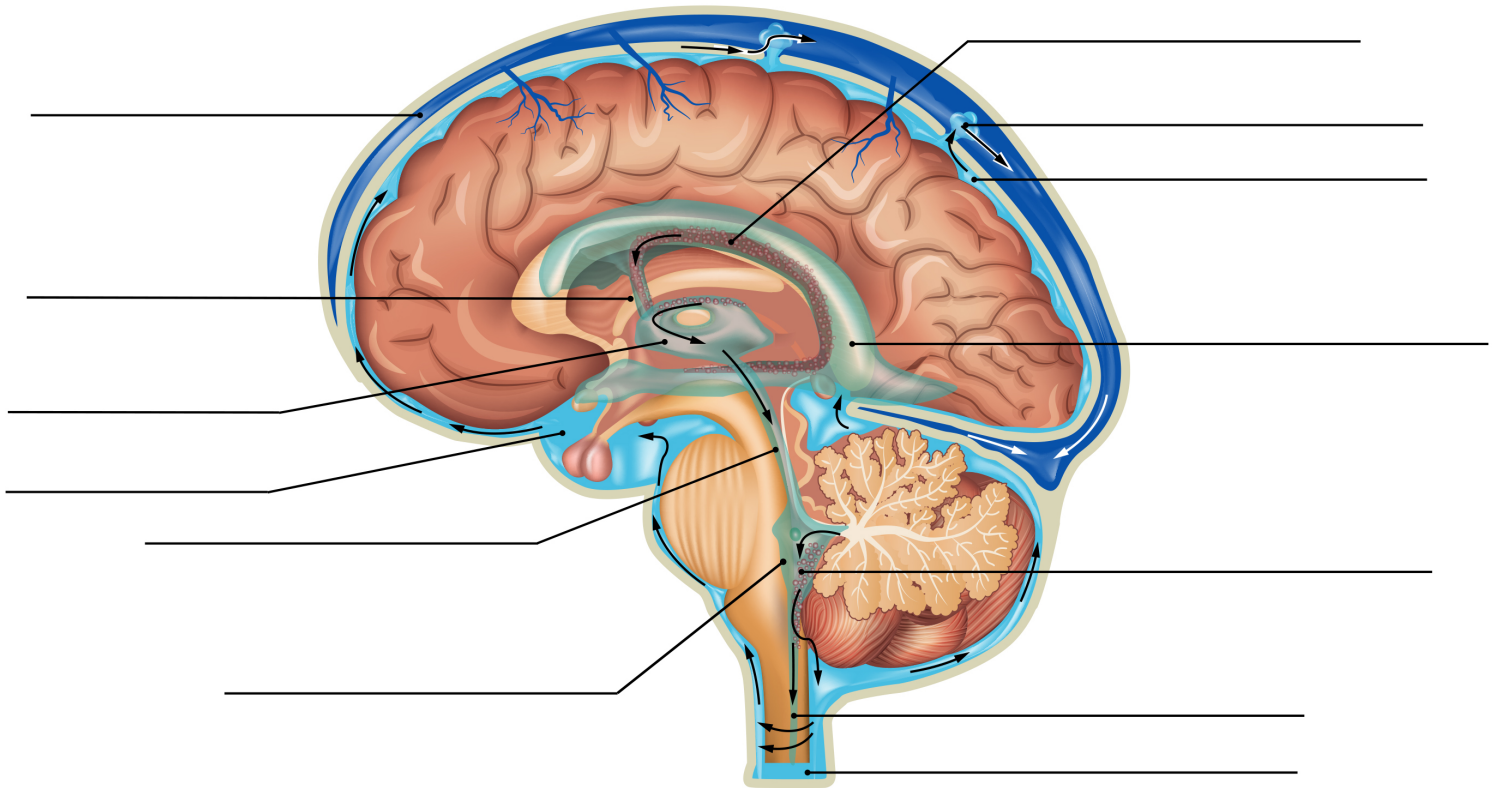
WORKSHEET



IDENTIFY AND LABEL THE PARTS OF THE BRAIN:

Frontal Lobe, Hippocampus, Limbic Lobe (includes Cingulate Gyrus), Parietal Lobe, Pons, Hypothalamus, Epithalamus/Pineal Gland, Thalamus, Cerebellum, Temporal Lobe, Sensory Cortex, Motor Cortex, Occipital Lobe, Corpus Callosum, Amygdala, Spinal Cord, Pituitary Gland, Medulla Oblongata, Reticular Formation, Midbrain

CEREBRAL SPINAL FLUID (CSF) & VENTRICLES WORKSHEET



IDENTIFY AND LABEL THE VENTRICLE SYSTEM:

Superior Sagittal Sinus, Fourth Ventricle, Choroid Plexus (label 2 places), CSF (label 3 places), Right Lateral Ventricle, Interventricular Foramen, Cerebral Aqueduct, Arachnoid Granulation, Third Ventricle, Central Canal

FILL IN THE BLANK or ANSWER:

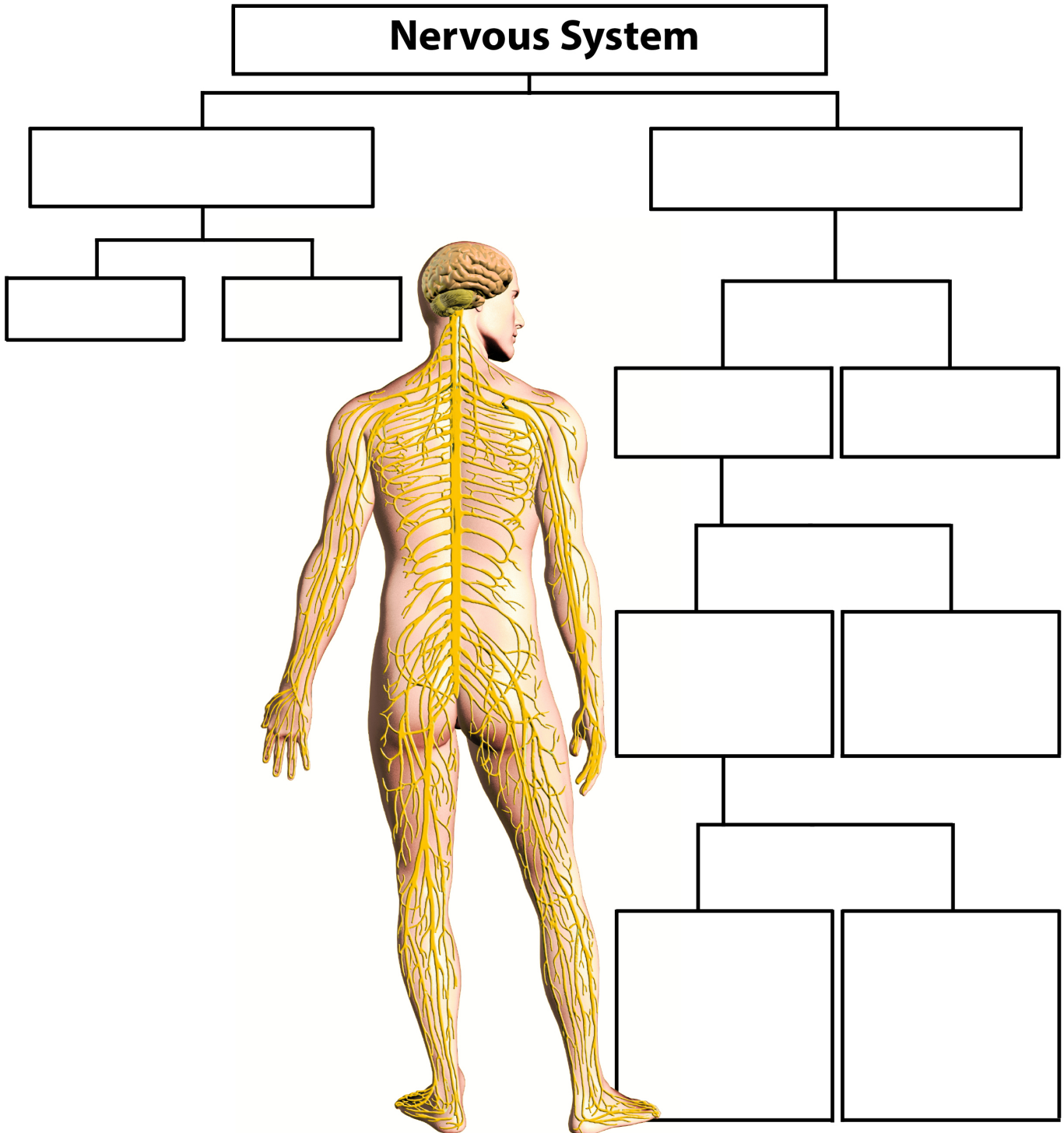
The fluid that bathes the brain is known as _____.

The fluid that is located in the spinal cord is known as _____.

What ventricle is not shown in this ventricle chart? _____.

NERVOUS SYSTEM

WORKSHEET 1

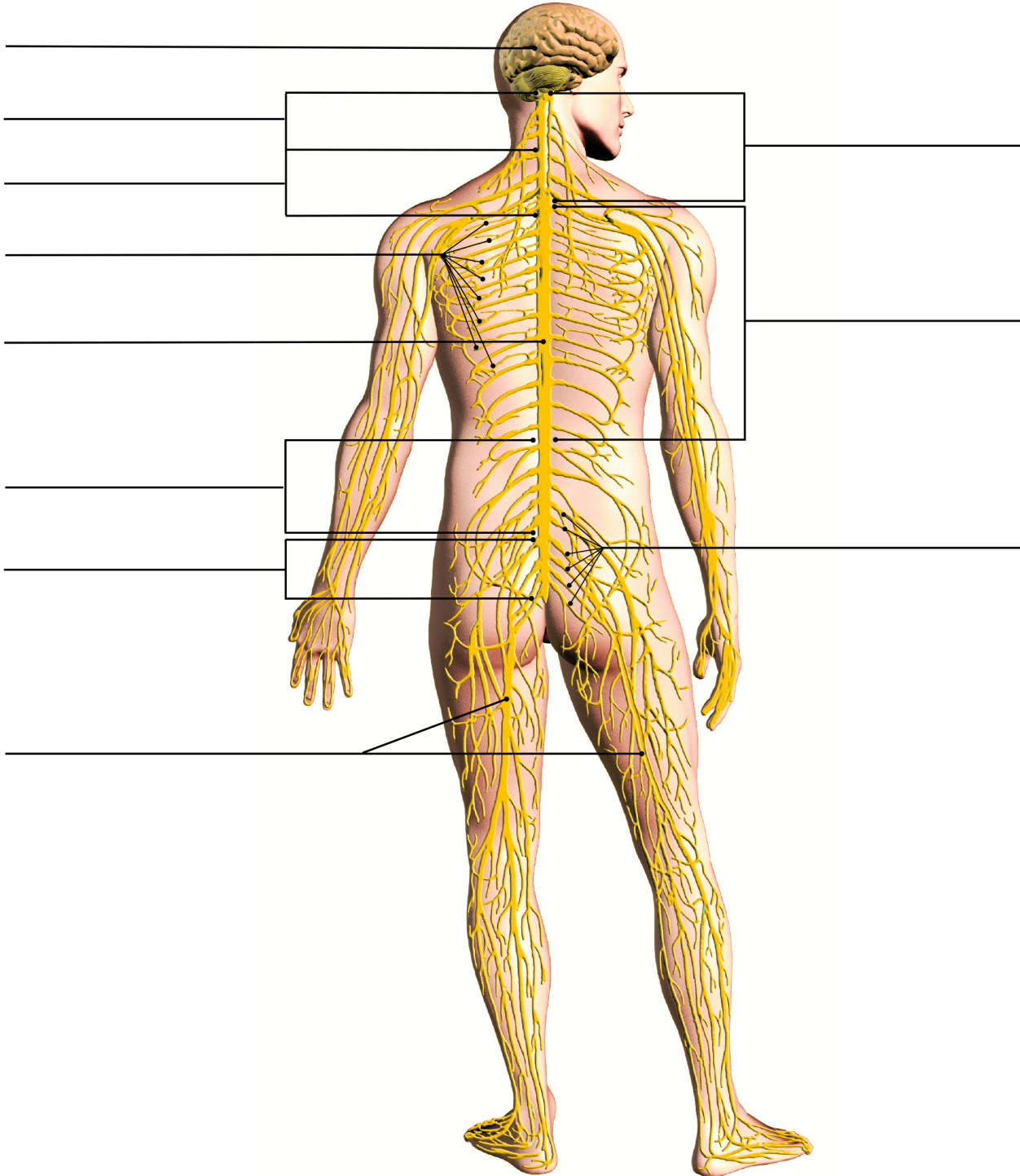


FILL IN THE BOXES WITH EACH COMPONENT OF THE NERVOUS SYSTEM:

Spinal Cord, Central Nervous System, Motor Neurons (efferent), Peripheral Nervous System, Autonomic Nervous System, Sympathetic Nervous System, Parasympathetic Nervous System, Brain, Sensory Neurons (afferent), Somatic Nervous System

NERVOUS SYSTEM

WORKSHEET 2



IDENTIFY AND LABEL THE FOLLOWING:

Brachial Plexus, Spinal Cord, Cervical Nerves, Lumbar Nerves & Plexus, Cauda Equina, Sciatic Nerves, Intercostal Nerves, Thoracic Nerves, Sacral Nerves & Plexus, Brain, Cervical Plexus

CRANIAL NERVES

WORKSHEET KEY

CRANIAL NERVE (CN)		FUNCTION
CN I	OLFACTORY	<i>Processes brain signal to move the eyes up & down, and outward (like a pulley).</i>
CN II	OPTIC	<i>Responsible for hearing information, getting it to the brain and balance.</i>
CN III	OCULOMOTOR	<i>Conveys sensory information for the front 2/3 tip of the tongue. Controls muscles used for facial expression. (lacrimal and salivary glands)</i>
CN IV	TROCHLEAR	<i>Transmits sensations to the mouth, teeth, face, and nasal cavity. Controls muscles for chewing.</i>
CN V	TRIGEMINAL	<i>Interprets and processes smells and tastes and ties them to an emotion and/or law-sensory.</i>
CN VI	ABDUCENS	<i>Looking forward you can see 180 degrees to the lateral sides.</i>
CN VII	FACIAL	<i>Controls outward lateral rectus movement.</i>
CN VIII	VESTIBULOCOCHLEAR	<i>Controls Tongue for speech and swallowing.</i>
CN IX	GLOSSOPHARYNGEAL	<i>Provides movement to the sternocleidomastoid muscle and trapezius muscle.</i>
CN X	VAGUS	<i>Senses light for dilation and constriction of pupils. Controls movement of muscles in pupils, eyeballs, and eyelids.</i>
CN XI	ACCESSORY	<i>Receives sensory information for taste. Controls muscles for swallowing with the tongue, back of the throat and gag reflex.</i>
CN XII	HYPOGLOSSAL	<i>Commands unconscious body procedures to maintain homeostasis.</i>

INSTRUCTION: Match the Cranial Nerves with their Function(s) by drawing a line connecting them.